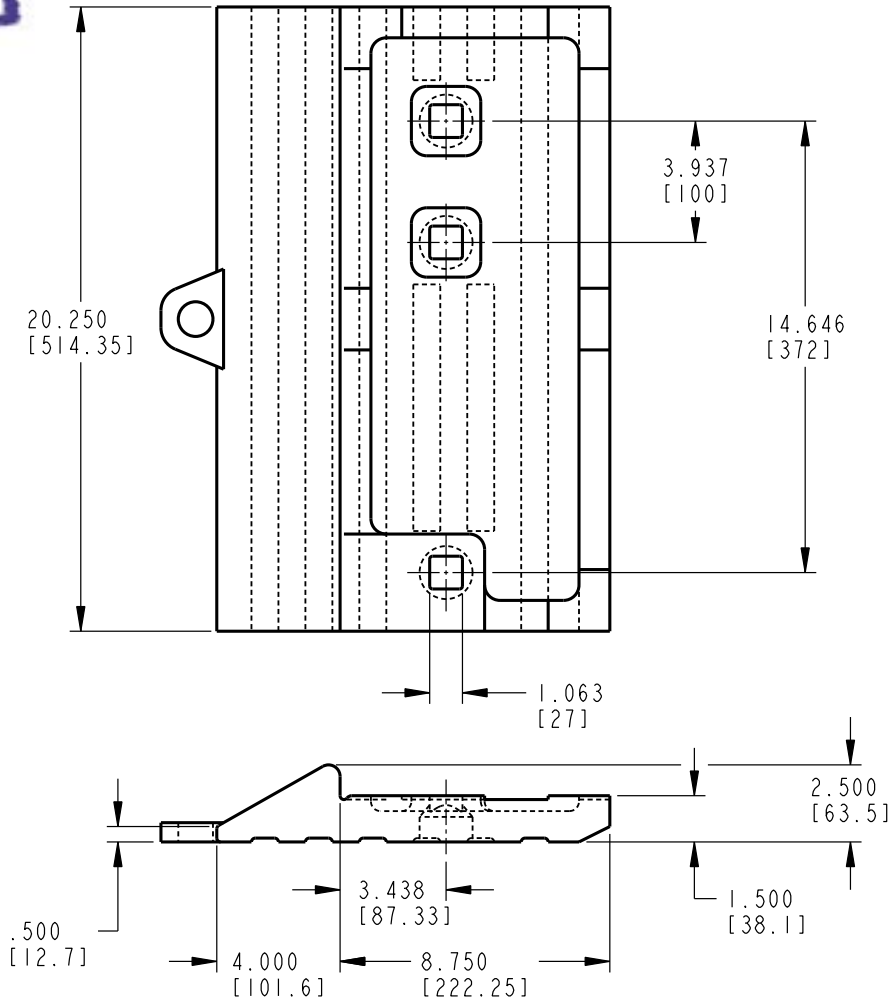


**NEW**

## Bolt-on Segment for Komatsu WA500-6 Loaders



Part #: 4257022220RNR (rh shown)  
4257022220LRN (lh opposite)

Description: Bolt-on segment

Weight: 90.0 lbs (40.9 kgs.)

Specifics: For WA500-6 loaders. Used on  
133.8" base edge #425-70-22220.  
Uses (3) A10-412 bolt assemblies.

### Hensley Customer Service

Toll Free US / Canada  
Phone: (888) 406-6262  
Fax: (888) 241-3274

All Other Locations  
Phone: (972) 406-6262  
Fax: (972) 241-3274

[www.hensleyind.com](http://www.hensleyind.com)

Safety first: Hensley Industries recommends that you use a soft-face hammer and ANSI-approved (Z87.1) eye protection when using our products.

© 2008 Hensley Industries, Inc.

Access to any specific item is subject to your individual dealer classification.